

Ventilo[®]

A Breathable Wall 

P O R
T F O
L I O

2022- 2023

Vol.- 1

ARCHITHEME

CREATIVELY | CRAFTED | DECOR

“Tranquility
comes from
the soul,
breath
connect's it.”



A product from “ ProStone ”



EST. 2019



Our newly launched “**Ventilo**” is an architectural ventilation blocks, which suits the needs of morden architectural & construction industries.

Ventilo blocks innovatively bridge the living spaces with the nature, to create high aesthetic living spaces and make them breezy and alive.

It especially used in townhouses, villas, farm houses, gardens, hotels, resorts, coffee shops, decorative-walls etc. to make them appealing, naturally breathable and light radiance spaces.

TABLE OF CONTENTS

Index

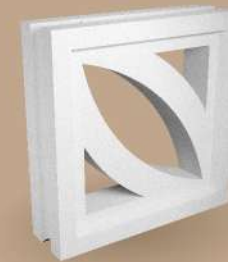
- 1 Rohmboz
- 2 Qbox
- 3 Petal
- 4 Flora
- 5 *Trinity
- 6 *Crossbow
- 7 *Neo Flora - 2/3 pcs. combo
- 8.1 *Neo Petal (Flip) - 2/3 pcs. combo
- 8.2 *Neo Petal (FloP) - 2 pcs. combo



Rohmboz
A star shaped
quadrilateral block
Page No. 01



Q Box
A simple yet elegant
geometrical block
Page No. 02



Petal
A dignified single
leaf block
Page No. 03



Flora
Classic Flower
Shaped block
Page No. 04



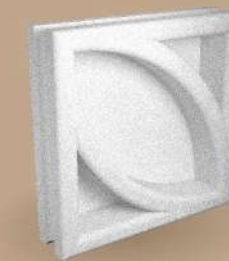
Trinity
Diagonally connected
geometric block
Page No. 05



Crossbow
An arrow shaped
decorative block
Page No. 06



Neo Flora
(2 Pcs. Set)
Abstract flower
shaped block
Page No. 07



Neo Petal (Front)
(2 in 1 "Flip Flop")
Abstract Petal
Shaped Block
Page No. 07

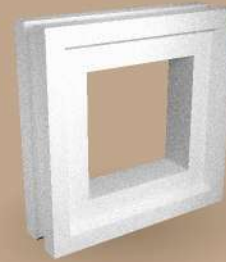


Neo Petal (Back)
(2 in 1 "Flip Flop")
Selective space hiding
Page No. 07

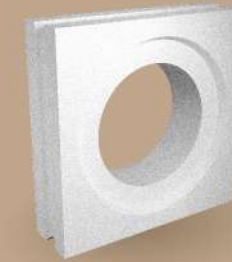
TABLE OF CONTENTS

Index

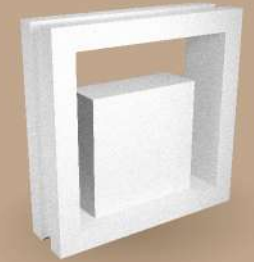
9	Hollow Cube - 2 pcs. combo
10	Hollow Sphere - 2 pcs. combo
11	*Gardenia - A - 2 pcs. combo
12	*Gardenia - B - 2 pcs. combo
*	More Designs Comming Soon...



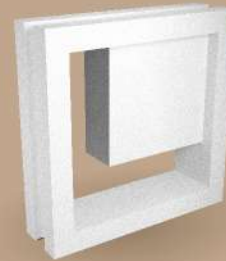
Hollow Cube
(2 Pcs. Set)
Square & Sphere
Open Space Elegance
2 pc. combo block
Page No. 08



Hollow Sphere
(2 Pcs. Set)
Square & Sphere
Open Space Elegance
2 pc. combo block
Page No. 08



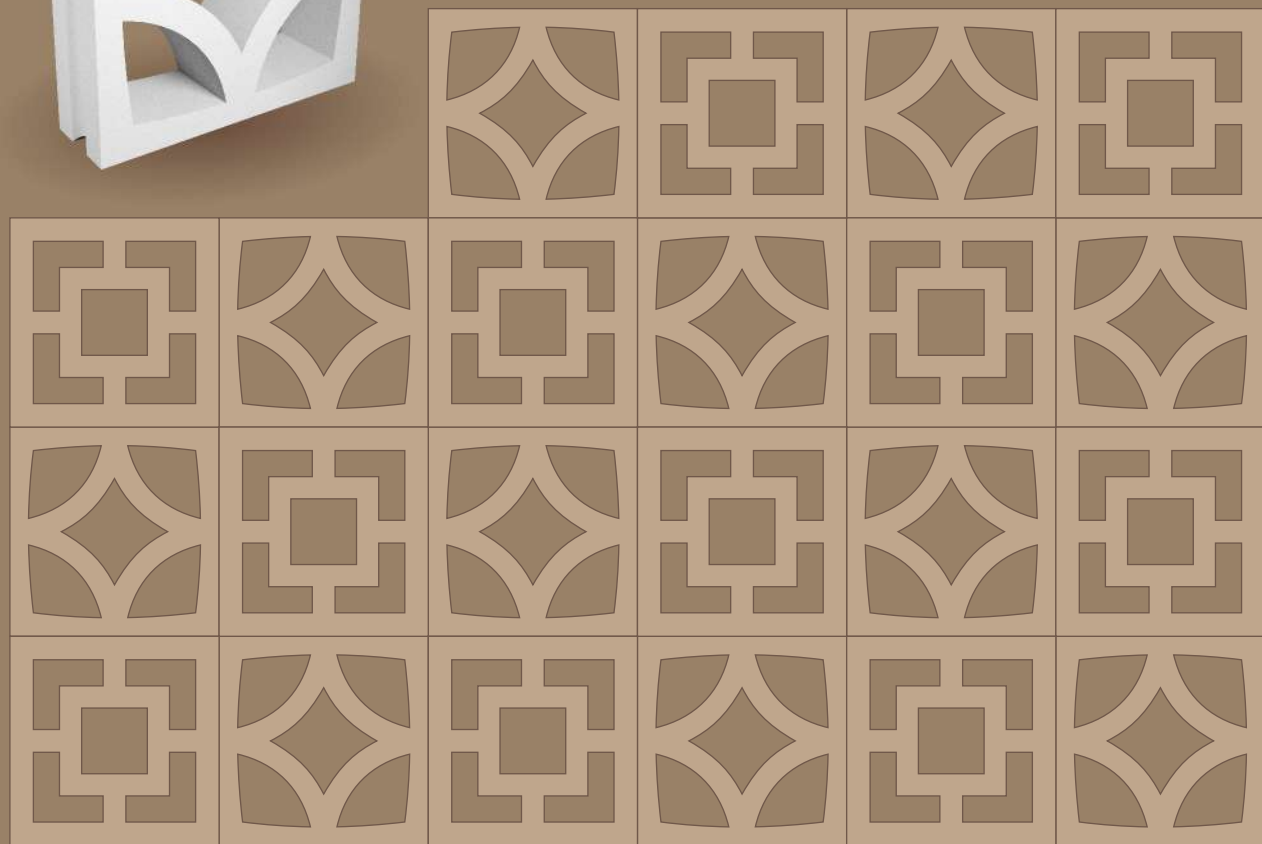
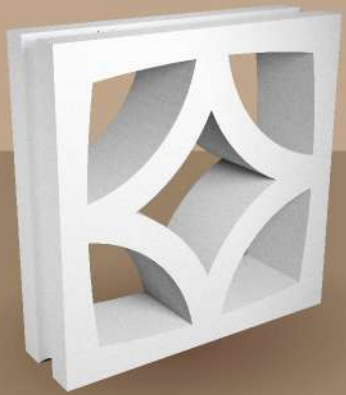
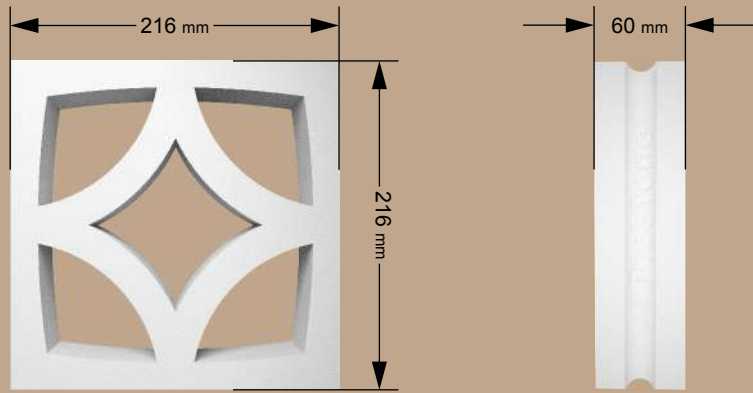
Gardenia- A
(2 Pcs. Set)
Vertical garden mania
2 pc. combo block
Page No. 09



Gardenia- B
(2 Pcs. Set)
Vertical garden mania
2 pc. combo block
Page No. 09

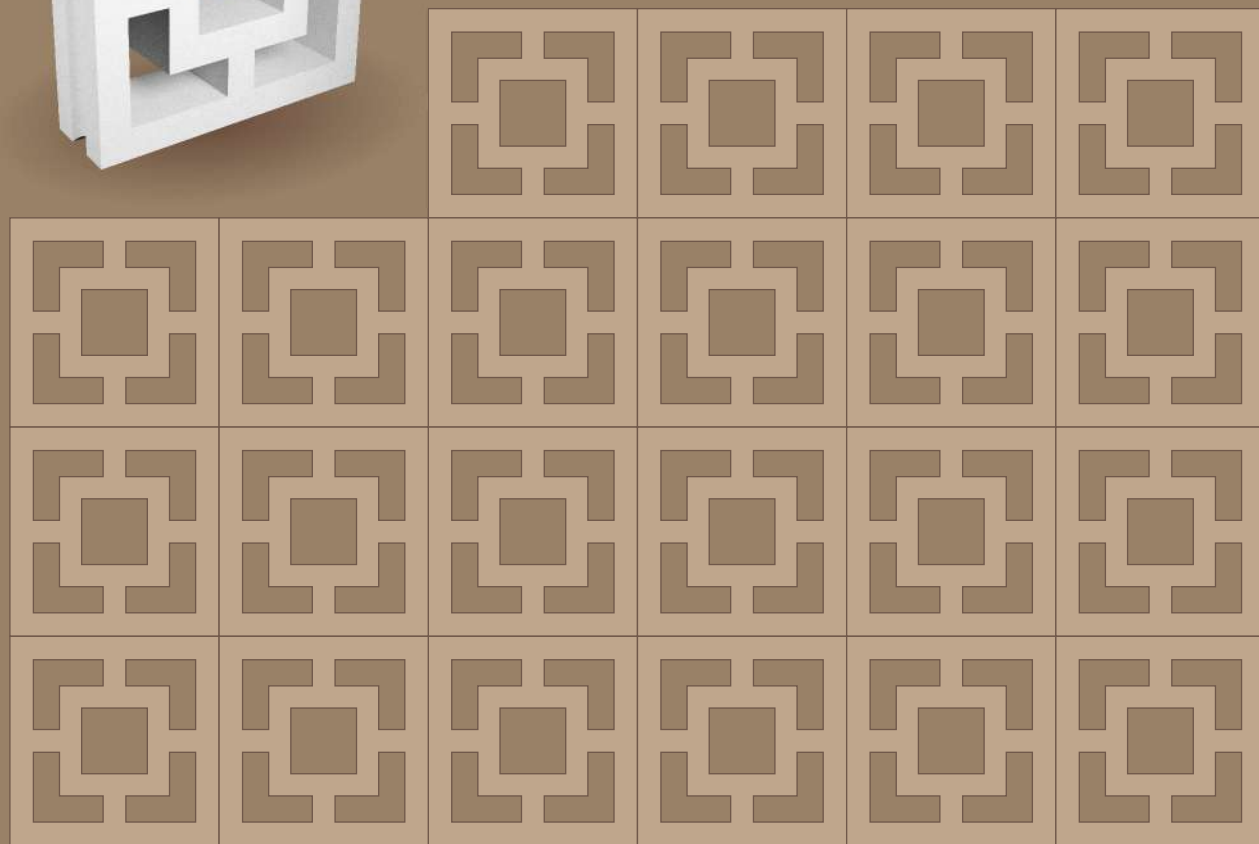
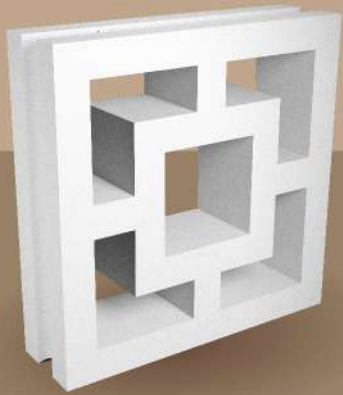
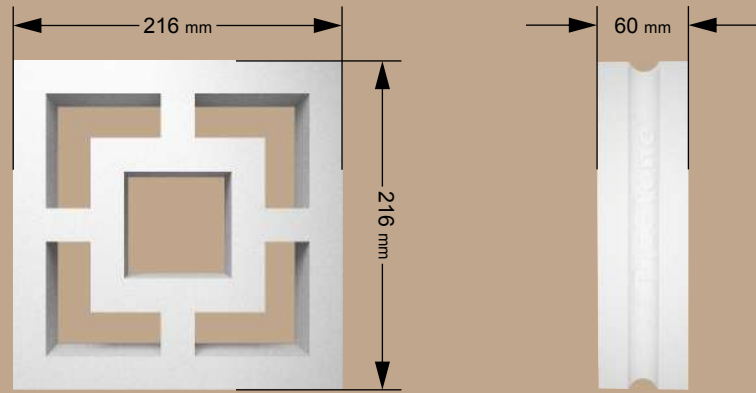
Rohmboz

Size : 216 x 216 x 60 (mm)
Weight : 3.20 Kgs Approx
Requirement Per Sq.Ft. : 2 Pcs.
Pieces Per Box : 6 Pcs.
Sq. Fts. Per Box : 3 Sq. Fts.



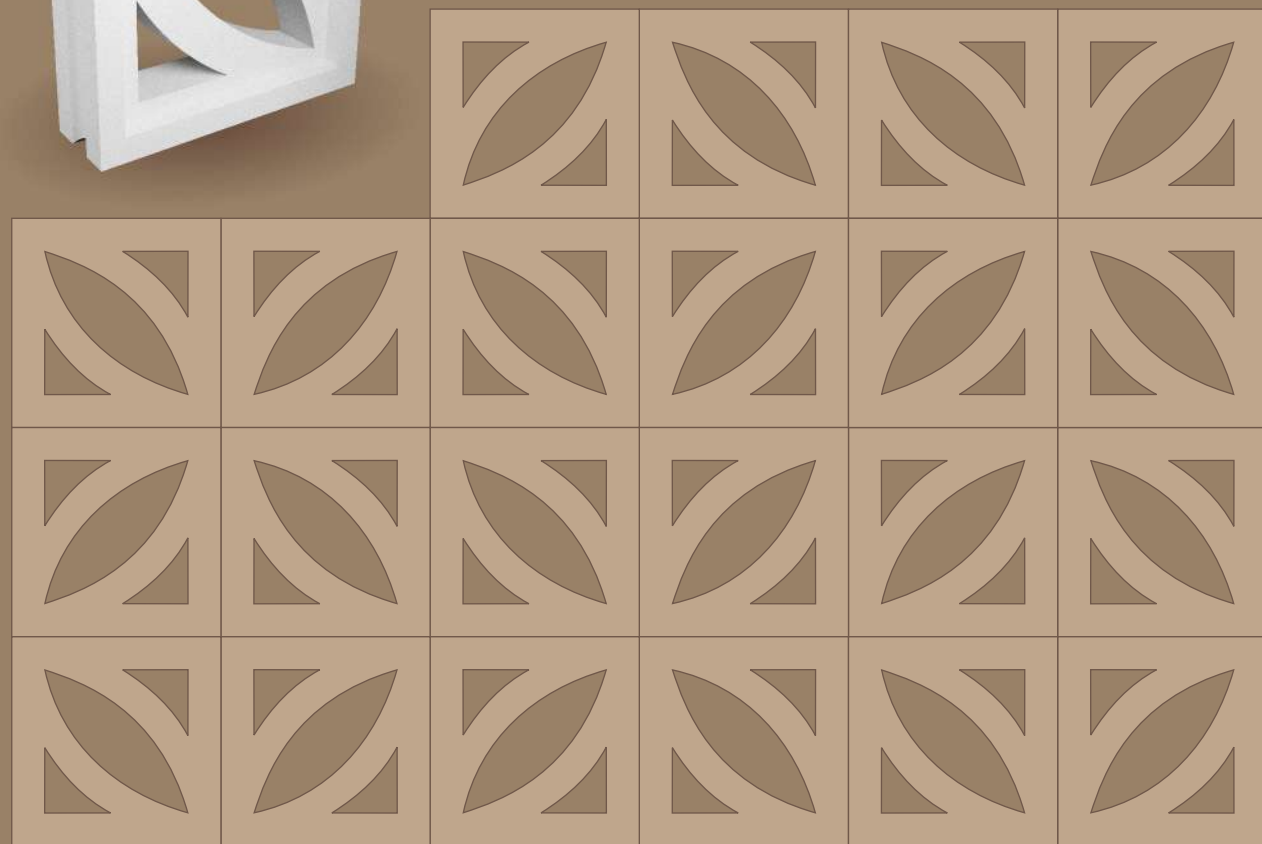
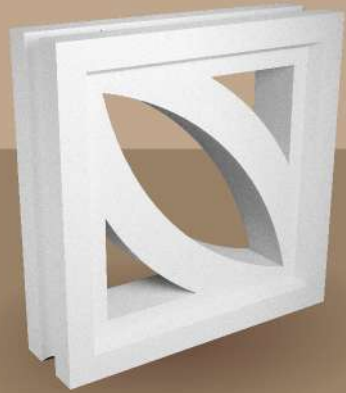
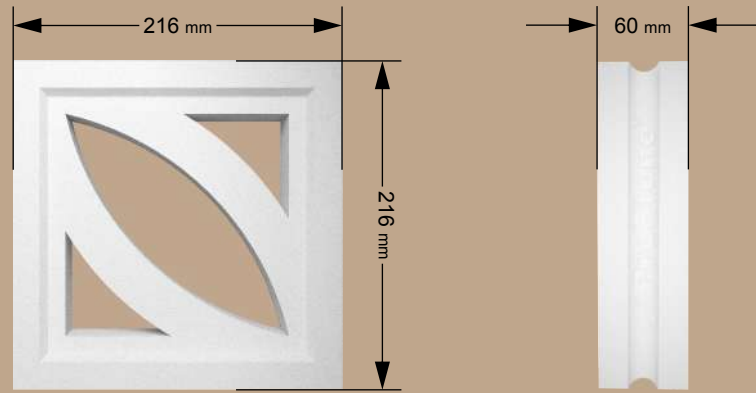
Q Box

Size : 216 x 216 x 60 (mm)
Weight : 3.45 Kgs Approx
Requirement Per Sq.Ft. : 2 Pcs.
Pieces Per Box : 6 Pcs.
Sq. Fts. Per Box : 3 Sq. Fts.



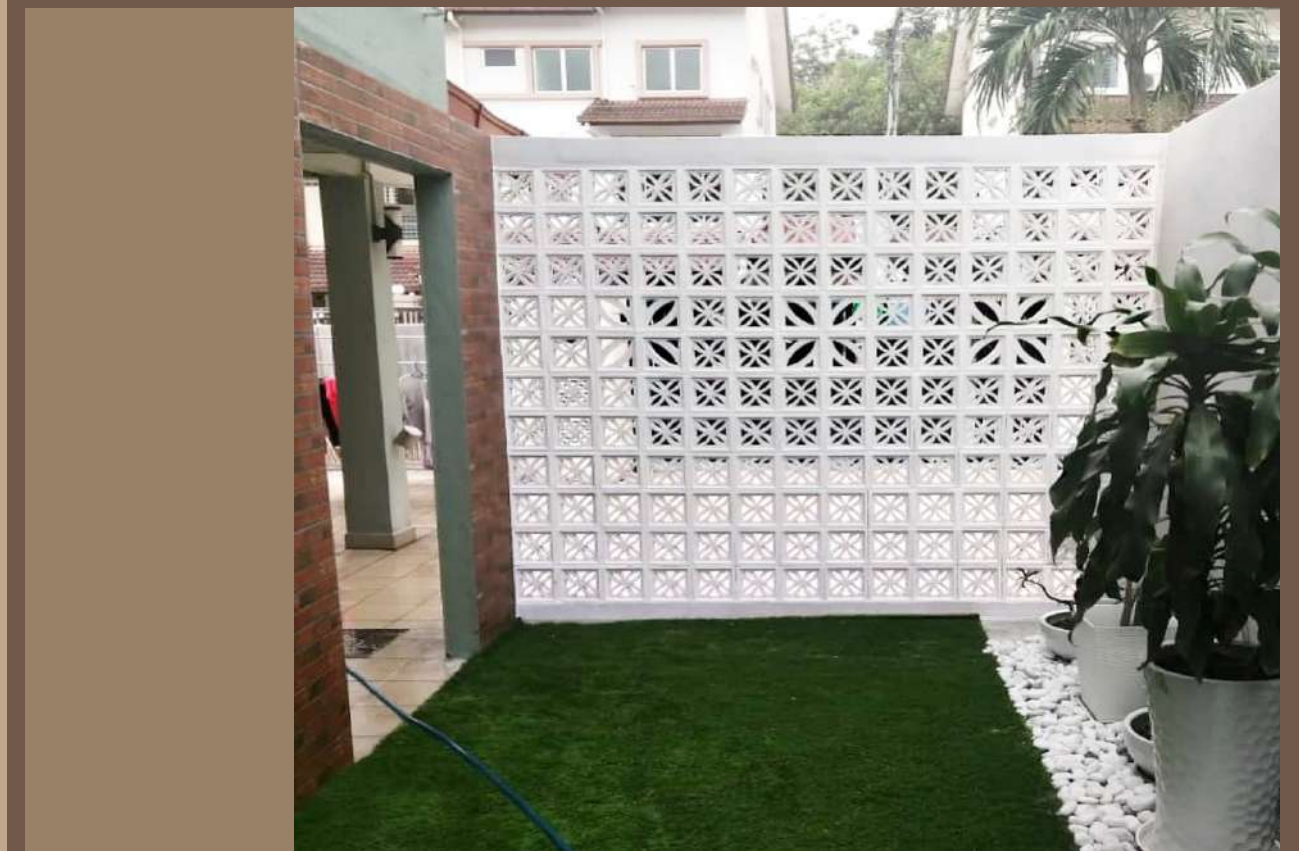
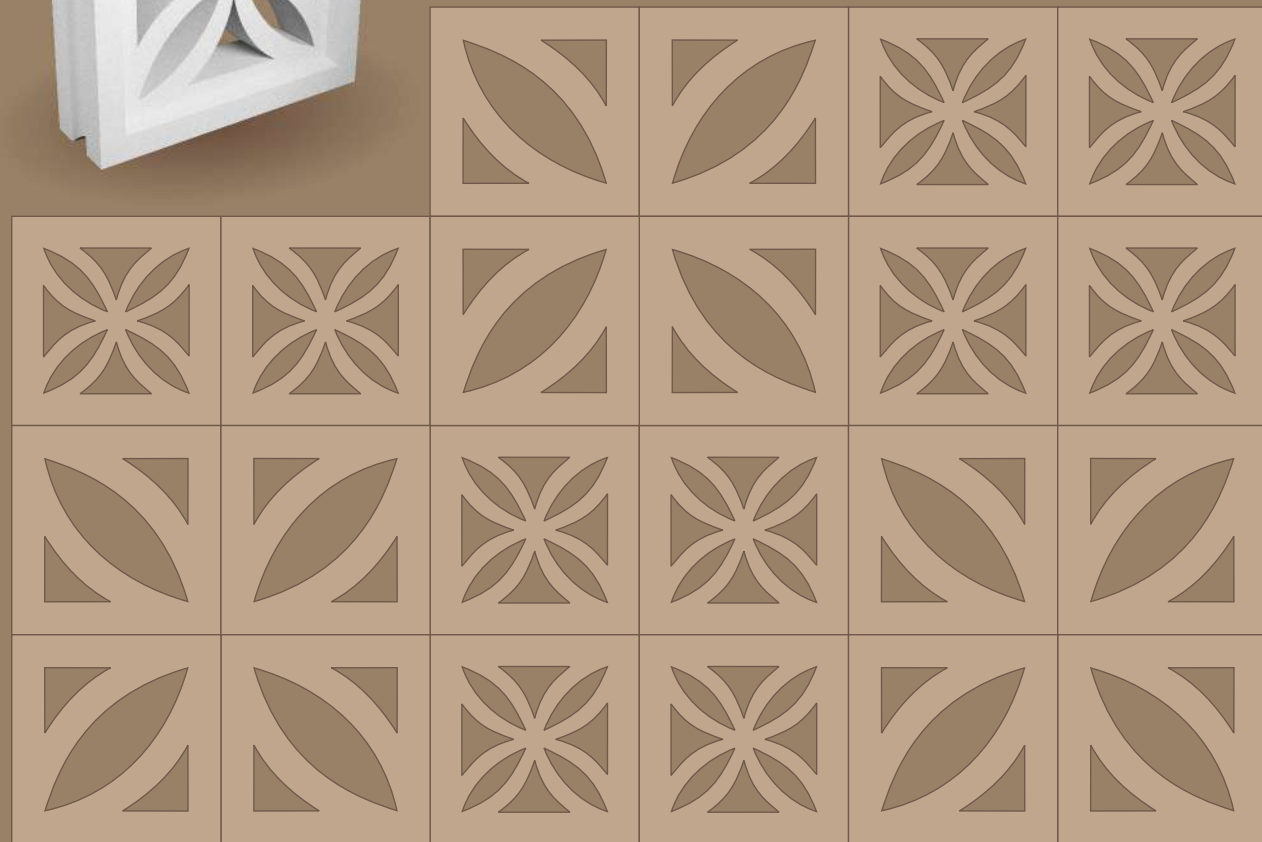
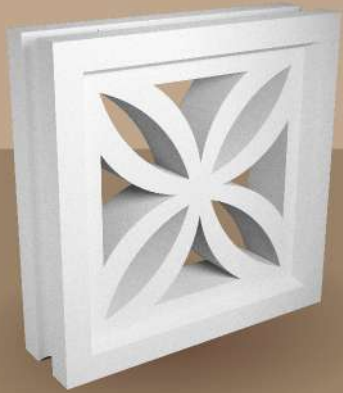
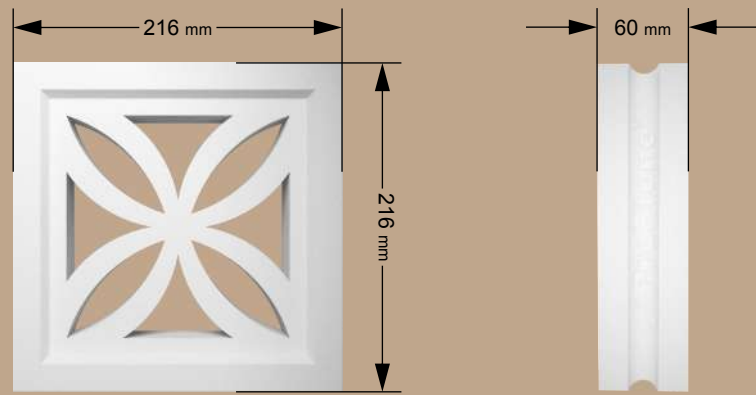
Petal

Size : 216 x 216 x 60 (mm)
Weight : 3.75 Kgs Approx
Requirement Per Sq.Ft. : 2 Pcs.
Pieces Per Box : 6 Pcs.
Sq. Fts. Per Box : 3 Sq. Fts.



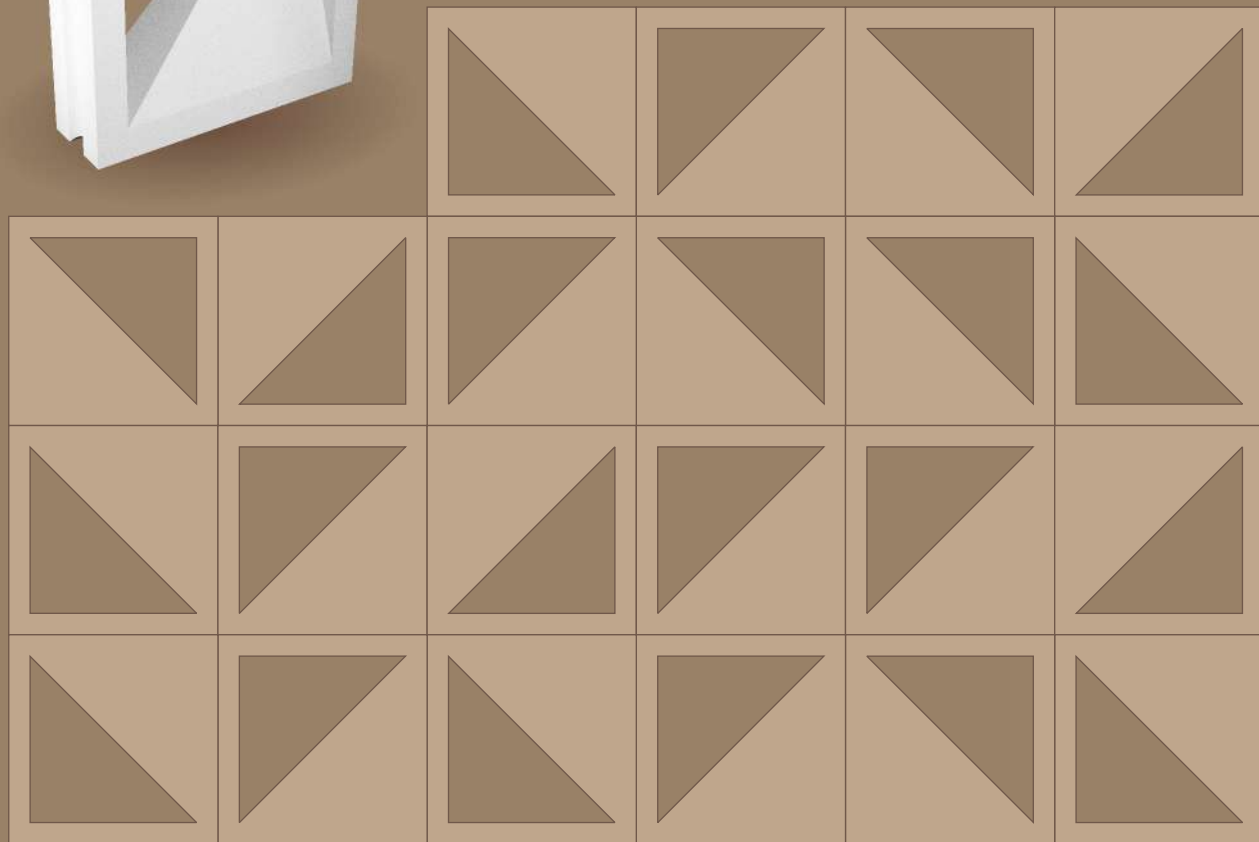
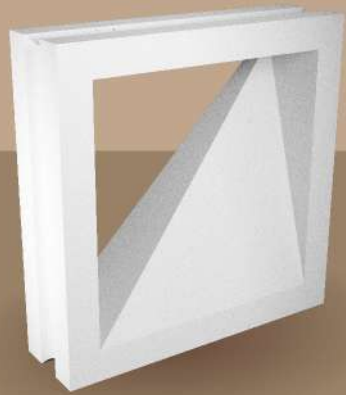
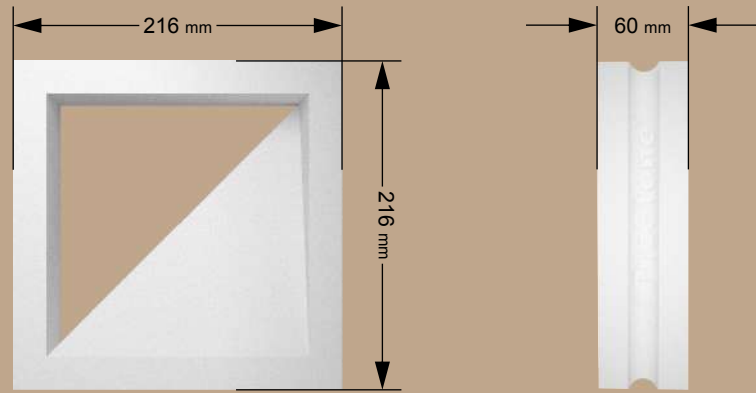
Flora

Size : 216 x 216 x 60 (mm)
Weight : 3.45 Kgs Approx
Requirement Per Sq.Ft. : 2 Pcs.
Pieces Per Box : 6 Pcs.
Sq. Fts. Per Box : 3 Sq. Fts.



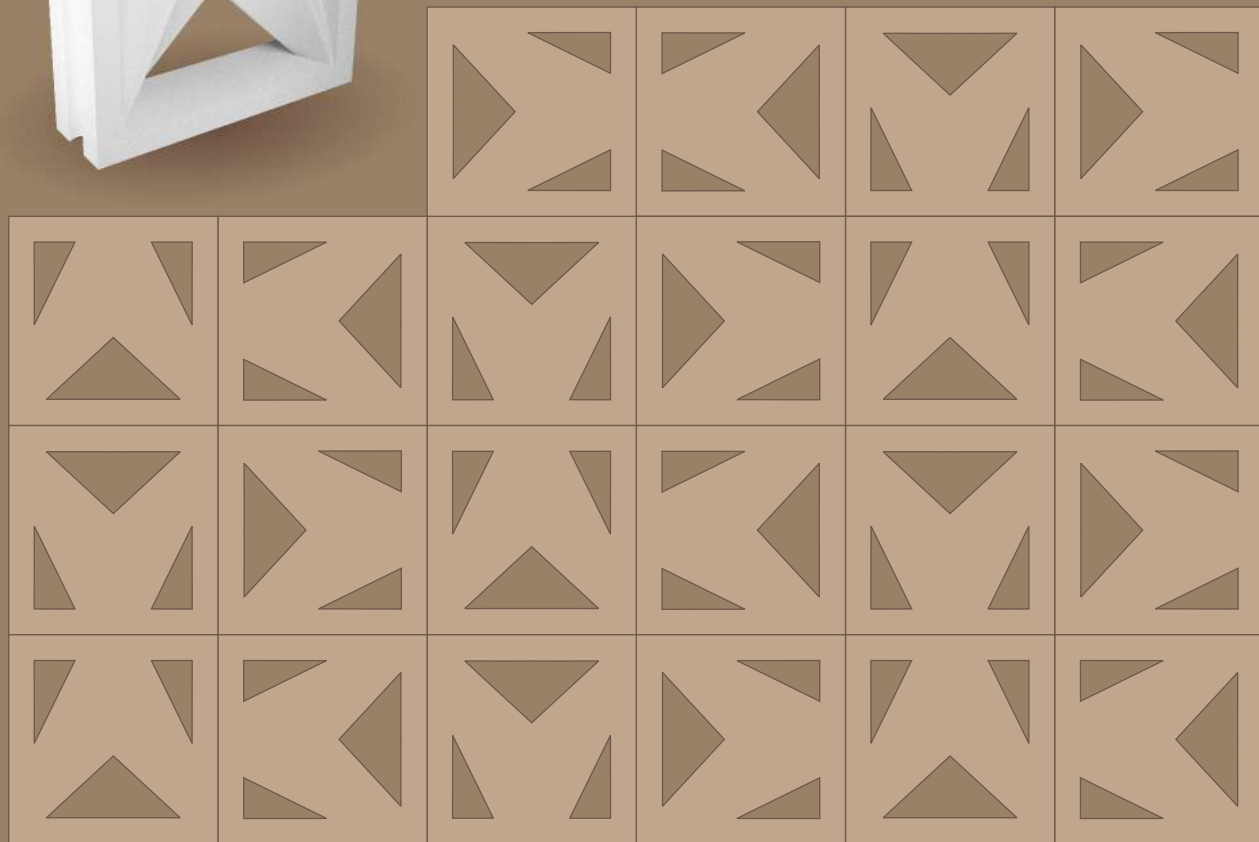
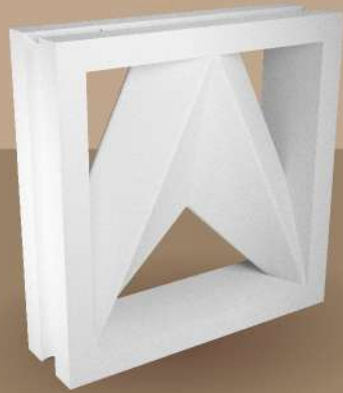
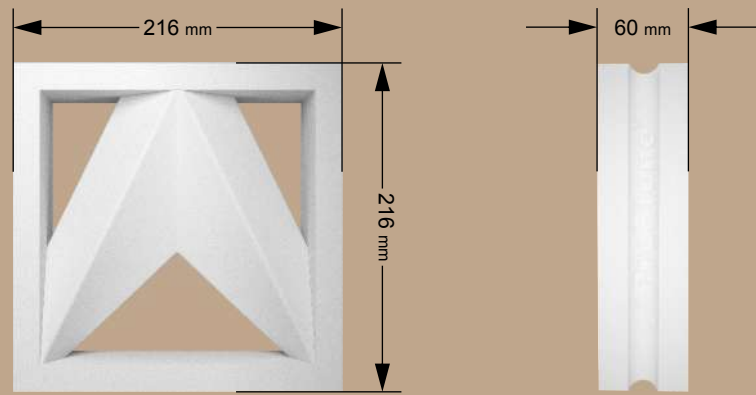
Trinity

Size : 216 x 216 x 60 (mm)
Weight : 2.85 Kgs Approx
Requirement Per Sq.Ft. : 2 Pcs.
Pieces Per Box : 6 Pcs.
Sq. Fts. Per Box : 3 Sq. Fts.



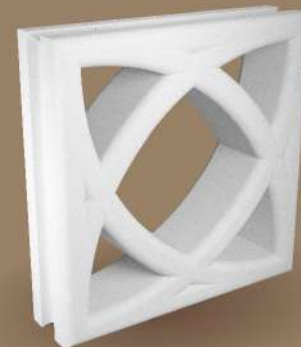
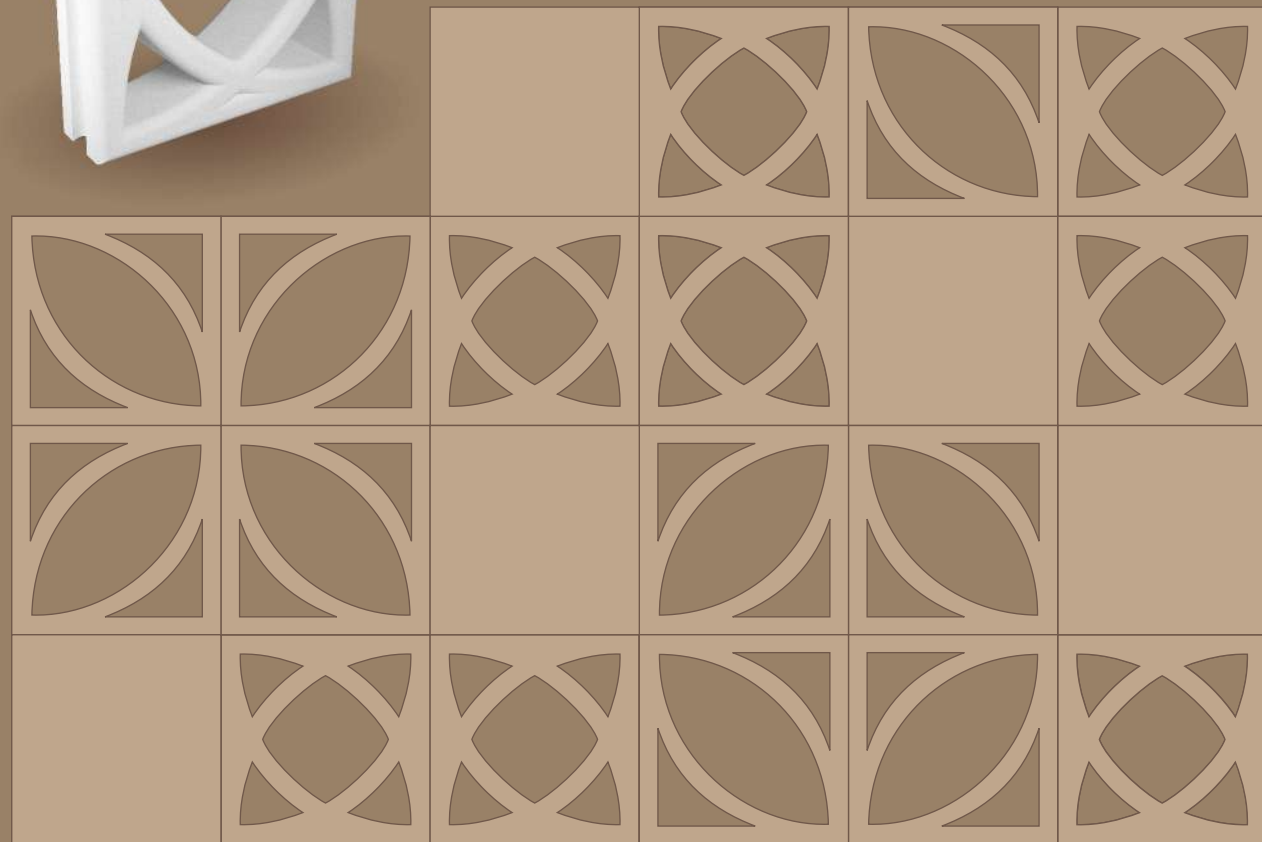
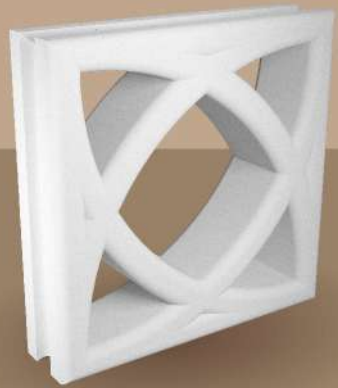
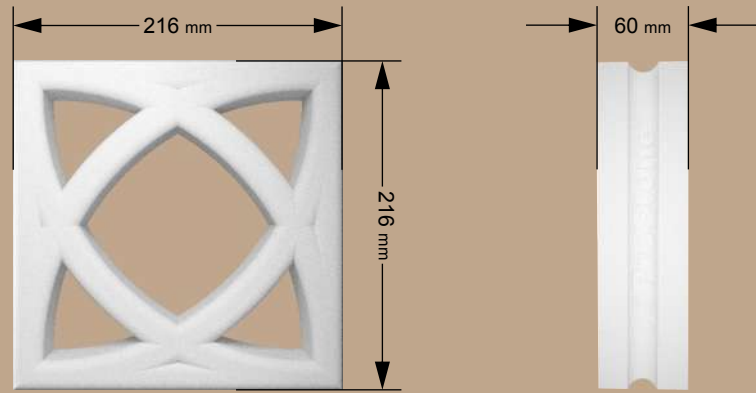
Crossbow

Size : 216 x 216 x 60 (mm)
Weight : 3.5 Kgs Approx
Requirement Per Sq.Ft. : 2 Pcs.
Pieces Per Box : 6 Pcs.
Sq. Fts. Per Box : 3 Sq. Fts.

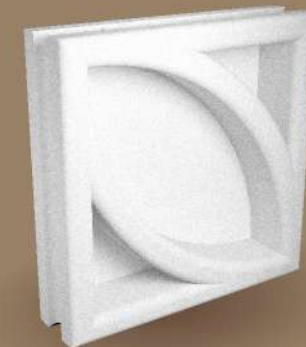


Neo Flora

Size : 216 x 216 x 60 (mm)
Weight : 3.5 Kgs Approx
Requirement Per Sq.Ft. : 2 Pcs.
Pieces Per Box : 6 Pcs.
Sq. Fts. Per Box : 3 Sq. Fts.



Neo Flora



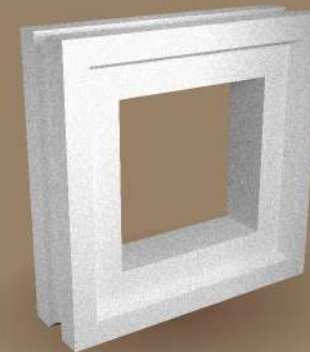
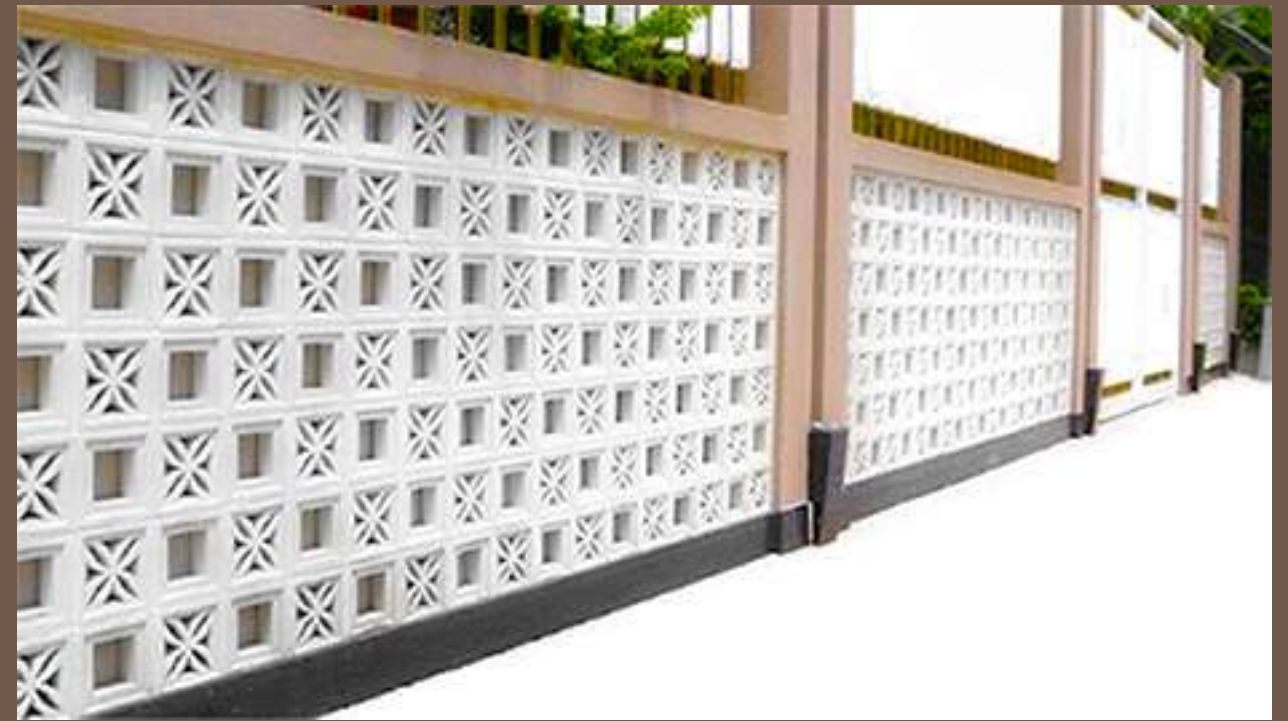
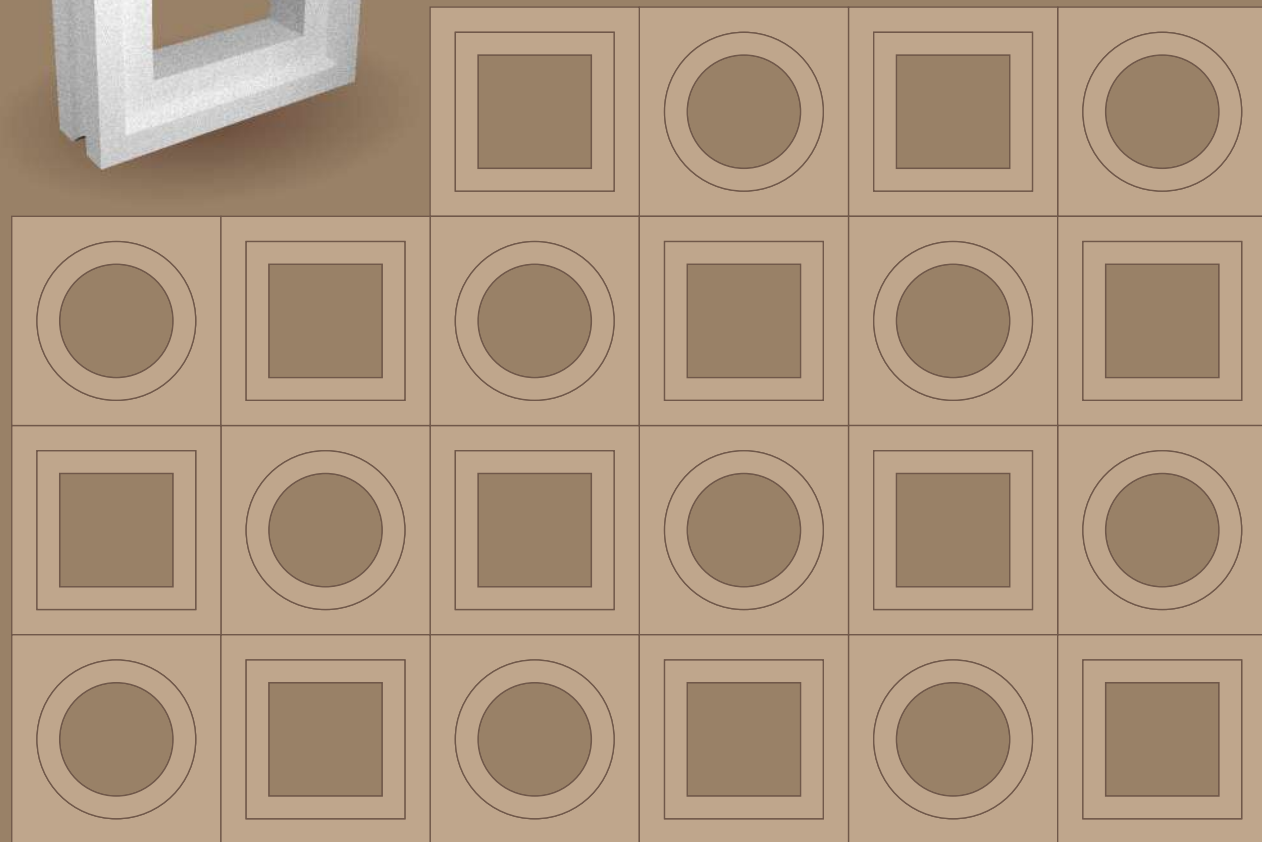
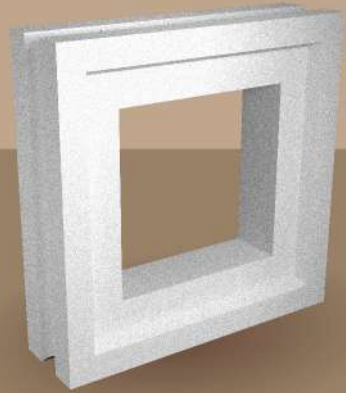
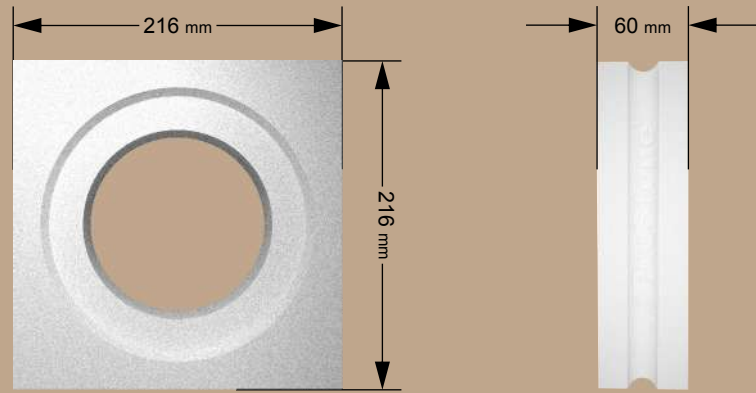
Neo Petal - Front



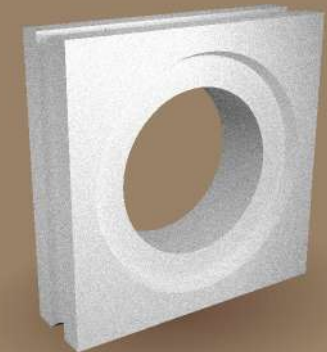
Neo Petal - Back

Hollow Cube

- Size : 216 x 216 x 60 (mm)
- Weight : 3.5 Kgs Approx
- Requirement Per Sq.Ft. : 2 Pcs.
- Pieces Per Box : 6 Pcs.
- Sq. Fts. Per Box : 3 Sq. Fts.



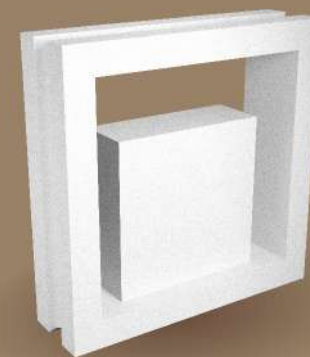
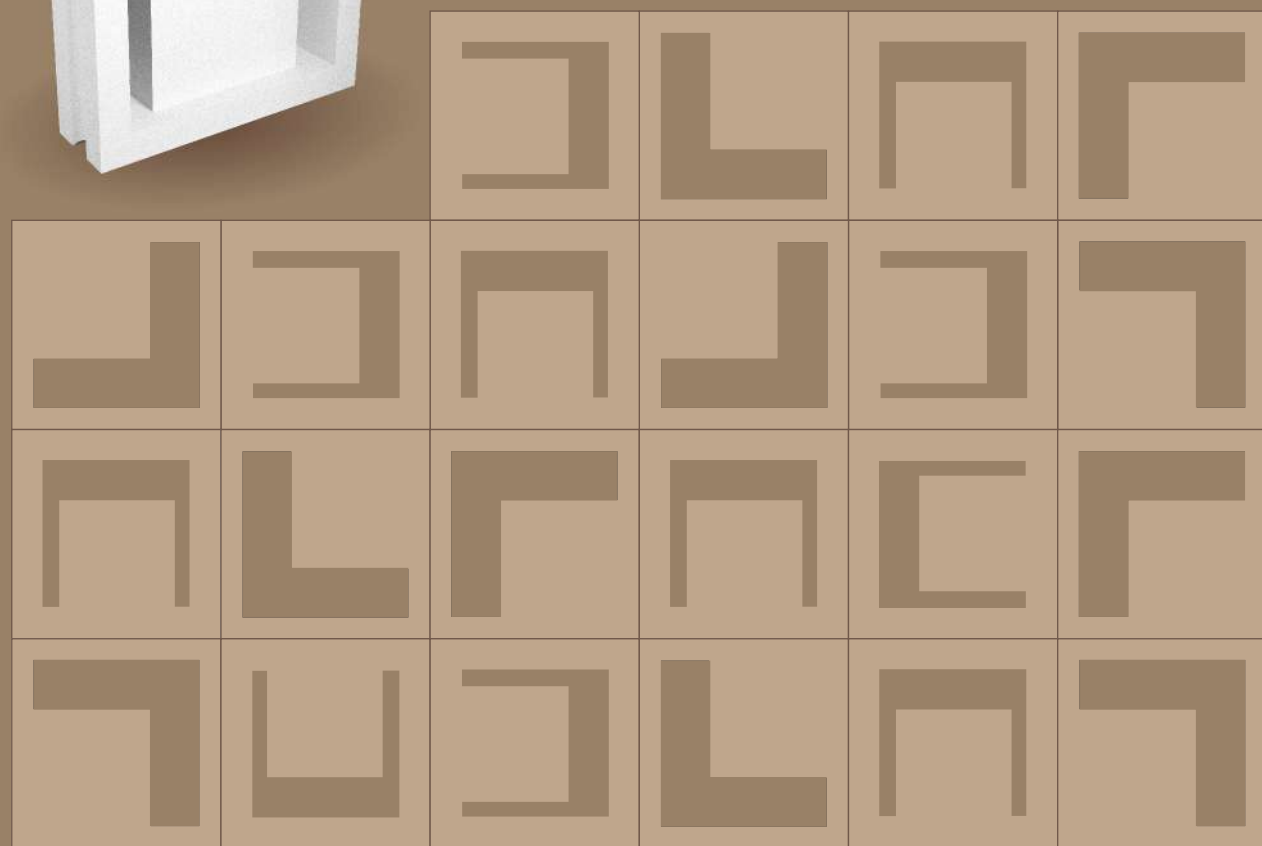
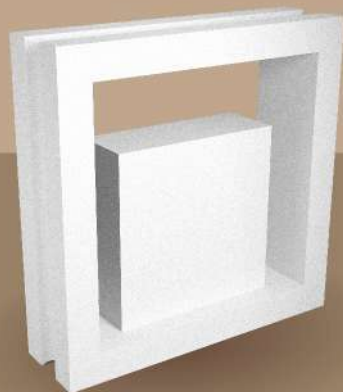
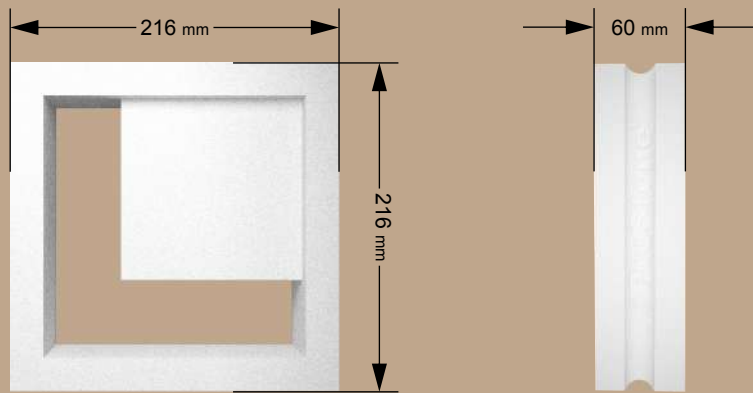
Hollow Cube



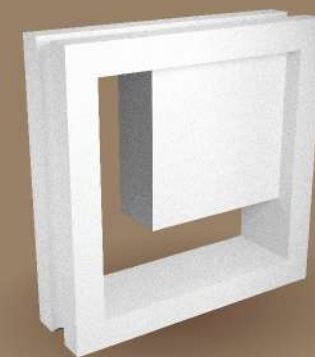
Hollow Sphere

Gardenia

Size : 216 x 216 x 60 (mm)
Weight : 3.5 Kgs Approx
Requirement Per Sq.Ft. : 2 Pcs.
Pieces Per Box : 6 Pcs.
Sq. Fts. Per Box : 3 Sq. Fts.



Gardenia- A



Gardenia- B

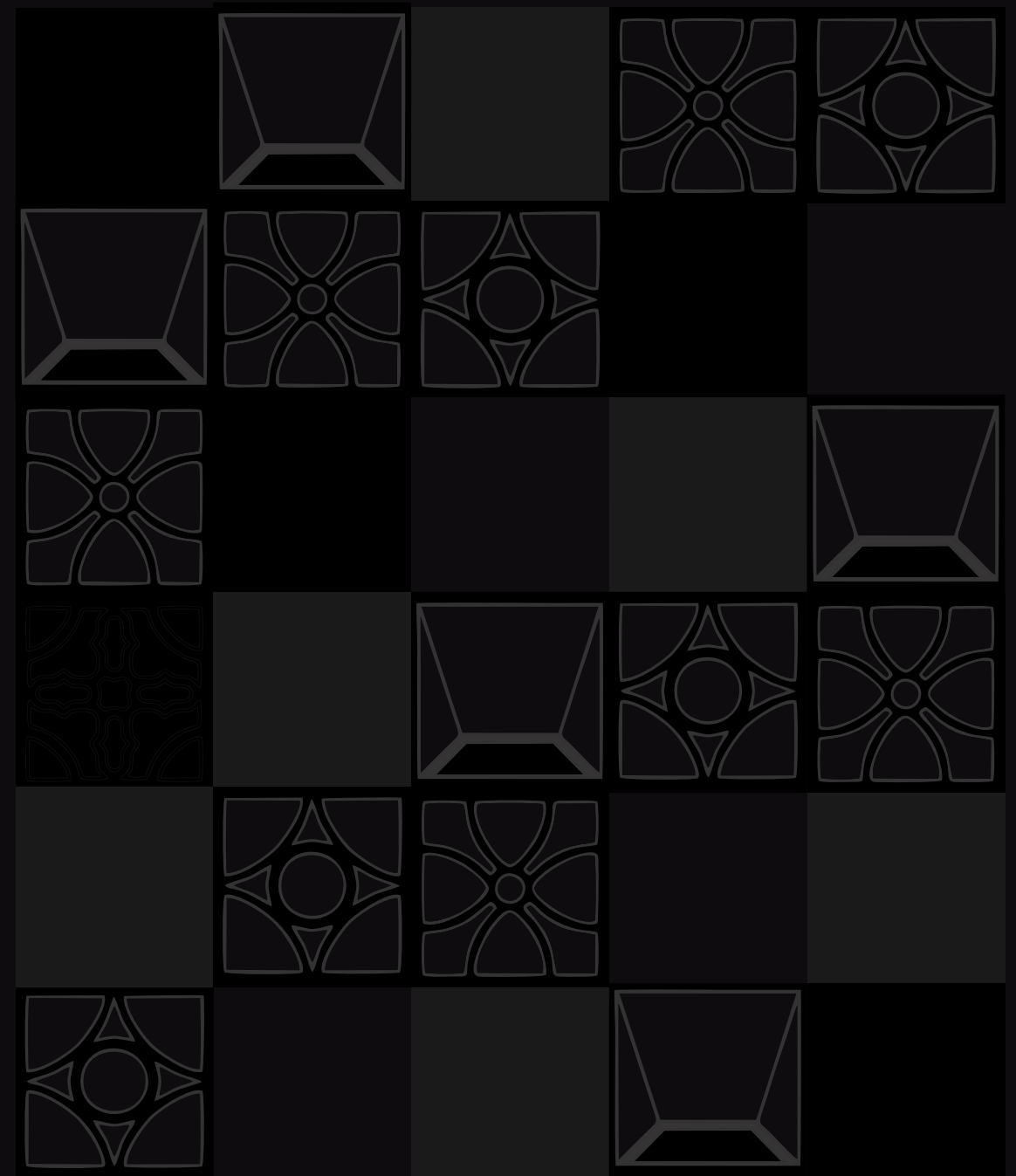
INSTALLATION GUIDE

PRIOR TO INSTALLATION OF THE MATERIAL PLEASE GO THROUGH THIS GUIDE CAREFULLY

- Do not install the ventilo blocks on the smooth and fragile bases such as flimsy surfaces or dust covered, ceramic, mosaic, tiles etc.
- Do not install the product if it is not in compliance with the specifications. Contact your supplier as soon as possible, producing the relevant purchasing invoice.
- During installation in extreme climates, we suggest to use adhesives as per the specifications.
- Watering the blocks before installation is important.
- Watering the finished wall after installation for 5 consecutive days (4 times a day).
- These steps are very important which effects directly to the wall quality later.

INSTALLATION PROCEDURE

- Measure the height and width of the estimated wall.
- Wall should be reinforced vertically and horizontally with iron rebar between the gap of two blocks, If the wall is over 2.5 meter height, and over 4 meter width, it should be locked by the 3-5 cm concrete beam.
- First clean the surface from dust and dirt, for good accretion of the mortar. Level out the base where first line of Ventilo blocks will be installed.
- Use hand gloves, if blocks are white or bright in color, to prevent dirt or stain on block.
- Clean the blocks using a dry plastic brush.
- While preparing mortar, consider the right amount of water, for good accretion and the right consistency of mortar.
- For adding space between the joint use spacer of desirable width, usually between 5-10 mm.
- Apply the 10mm mortar layer on each top and side faces of the block and lay it into the correct position. Remove excess mortar using a trowel.
- Start the first block laying from the bottom corner.
- Place the block by pressing hard to ensure a very good adherence of the mortar on the side surface of the block.
- Use a rubber mallet(rubber hammer) to properly fix and level the block, in order not to wound the block.
- Use the normal tile cutting machine, if needed.
- If mortars gets on the surface of the blocks, before it hardens (after 0.5 or 1 hour) brush off the mortar with a soft wired brushed or hard plastic, do not use metal.
- Apply protective / colour enhancer coat to blocks. (Water based acrylic paintcould be used to color the blocks)



EST. 2019

ProStone[®]
CRAFTING ELEGANCE

+91 98252 62192 +91 75749 62192

www.prostone.in | info@prostone.in

Ventilo[®]
A Breathable Wall